

Canon

imagePRESS  
C910/C810/C710

COLOR DIGITAL PRESSES



## REAP THE BENEFITS OF PRODUCTIVITY, VERSATILITY, AND HIGH QUALITY

The imagePRESS C910 Series is a true, light- to mid-volume production press that incorporates advanced technologies to help print establishments achieve amazing results—all in a small footprint.

Incorporated into this color digital press is Canon's passion and unique understanding of imaging, photography, color science, and workflow. This expertise has resulted in a high-quality digital press that's both productive and versatile for printing establishments of varying shapes and sizes.



imagePRESS C910 shown with optional accessories.

### Outstanding Productivity

- Production speeds of up to 90 ipm
- Maintains rated speed on uncoated stocks up to 80 lb. Cover
- 10,400-sheet<sup>1</sup> feeding capacity with up to six different sources<sup>2</sup>
- Wide array of productive Canon and third-party in-line accessories<sup>2</sup>

### Amazing Quality

- 2400 x 2400-dpi print resolution utilizing the unique R-VCSEL imaging technology
- Intuitive calibration process that uses internal sensors to measure test patches
- Translucent CV Toner produces vibrant images on a wide variety of stocks
- Multi D.A.T. helps to achieve consistent color across long runs automatically

### Brilliant Versatility

- Supports stocks up to 130 lb. Cover<sup>2</sup>
- Runs a variety of envelopes and long sheets<sup>2</sup> up to 51.2"
- Helps achieve highly accurate and consistent registration, even on large and heavy stocks
- Meets ENERGY STAR<sup>®</sup> standards and rated EPEAT Gold

<sup>1</sup> Capacity based on 20 lb. Bond.

<sup>2</sup> Optional accessories required.

# MAKE AN IMPACT WITH INNOVATIVE TECHNOLOGIES

The synergy of the intuitive UI and easy-to-operate press can help your entry-level and most experienced operators produce brilliant output on a wide range of medias. At the same time, it helps to shorten turnaround times on your most simple and complex jobs.

This color digital press is engineered to help you meet the high expectations of your demanding clients, hit tight deadlines, and expand your portfolio to include creative and innovative applications—all without having to make a significant investment.



# MAXIMIZE YOUR THROUGHPUT



## OPTIMAL PRODUCTIVITY

Reach impressive production speeds of up to 90 letter-sized impressions per minute and allow your operators to tend to crucial tasks while the press auto duplexes heavy and thick stocks up to 130 lb. Cover<sup>3</sup> and long-sheet stocks up to 30 inches in length.<sup>3</sup>

## ON-THE-FLY

Keep the press running and maintain a steady workflow with the ability to replace paper and toner without having to stop for unnecessary routine tasks.

## QUALITY AND SPEED

Stay productive on standard and mixed-media jobs without sacrificing quality, allowing you to produce a wide range of applications from a single, versatile engine.

## A VAST MEDIA SELECTION

Offer customers more with wide support of various types of medias, including coated, thick, and specialty stocks up to 130 lb. Cover.<sup>3</sup> And print on envelopes and long sheets up to 51.2 inches.<sup>3</sup>

## ACCURATE ALIGNMENT

A combination of digital sensors, together with registration rollers, help to ensure that even heavy and large sheets are accurately and consistently positioned.

## WHITE PAPER IN—FINISHED PRODUCT OUT

Keep more jobs in-house—and with less effort—by selecting from an extensive array of Canon and third-party in-line finishing options that offer creasing, booklet-making, and trimming.<sup>3</sup>

<sup>3</sup> Optional accessories required.

# STAND OUT WITH CONSISTENT AND ACCURATE COLOR

## DETAIL DOWN TO THE DOT

Output crisp, color images with remarkable clarity at high speeds with the imagePRESS C910 Series' state-of-the-art R-VCSEL laser technology at 2400 x 2400 dpi and 190 lpi.

## OFFSET-LIKE PRINT QUALITY

By allowing the surface properties of your media to show through Canon's translucent CV Toner, the press can produce amazingly vibrant and vivid images across the entire sheet surface on a wide variety of stocks.

## READY FOR SMOOTH AND ROUGH SURFACES

The combination of its flexible transfer belt and Simple Transfer Adjustment technology allows toner to fill in the peaks and valleys of your textured and embossed stocks, producing high-density images for custom and premium applications.

## AUTOMATIC COLOR CORRECTION

Once initiated by your operator, the color digital press performs a real-time press calibration automatically, helping to deliver repeatable, high-quality output with minimal effort.

## OUTSTANDING STABILITY

Maintaining a consistent environment and automatic measuring of multigradation density patches combine to help ensure that your highlights, midtones, and shadows are reproduced to your high expectations.

## CHECKING THINGS TWICE

Every dot is imaged twice, helping to produce accurate, superb quality across long runs and throughout the life of the drum.

### PRECISE

Every dot is imaged twice, helping to ensure high-quality, detailed images.

### VIBRANT

Produce astonishing neutrals with great contrast and a large dynamic range.

### ACCURATE

Gradations are automatically measured and corrected during production.





## EXPERIENCE END-TO-END INNOVATION



### 1 COMPACT REGISTRATION UNIT

Designed to achieve highly accurate, front-to-back and sheet-to-sheet registration across long runs on large, heavy, and stiff stocks—all in a small compact design.

### 2 R-VCSEL LASER TECHNOLOGY

Advanced 32-beam red VCSEL laser delivers 2400 x 2400 dpi, outputting detailed color images with outstanding definition at high speeds.

### 3 MULTIEXPOSURE TECHNOLOGY

Laser writes every dot on the drum twice when creating images, which helps maintain high image quality consistently across long production runs.

### 4 TRANSLUCENT CV TONER

Helps produce consistent, vivid, and crisp images on a wide range of media with a realistic, offset-like finish.

### 5 ADVANCED IMAGING TRANSFER BELT

Flexible belt presses the toner into the media, enabling a high-density image transfer onto embossed and textured stocks.

### 6 MULTI D.A.T. TECHNOLOGY

Multigradation density patches are measured and corrected during production automatically, which helps ensure consistent halftones during production.

### 7 ADVANCED TWIN-BELT FUSING TECHNOLOGY

Innovative induction heating and cooling technologies use two belts that allow the press to fuse at a lower temperature and produce complex jobs at high speeds.

### 8 AUTOMATIC COLOR CALIBRATION

Intuitive engine calibration feature uses an in-line sensor to read color test patches automatically, helping to minimize operator error and achieve brilliant and predictable color.

# PRODUCE A BROAD ARRAY OF PRINT PRODUCTS



## FINISHING OPTIONS

### Document Inserting



This module enables insertion of slip sheets or preprinted covers for booklets and complex jobs.

### Professional Punching and Creasing



The numerous die patterns offered for in-line hole punching (including double punching) and creasing help minimize toner cracking on the spines of saddle-stitched booklets.

### Perfect Binding



Using hot glue, this module binds covers to book blocks of up to 400 pages<sup>4</sup> and can trim on all three sides for full-bleed books or manuals.

### High-Capacity Stacking



Realize maximum productivity with unload-while-run capability, helping to provide uninterrupted printing with stacking up to 6,000 sheets.<sup>4</sup>

### Ring Binding



Utilize the GBC eWire Pro or Max Ring Binder to automate the time-consuming process of wire binding manuals, booklets, and reports.

### Paper Folding



Offer promotional pamphlets, brochures, and more with the ability to produce Z-fold, C-fold, accordion fold, and double-parallel fold documents.

### Staple and Saddle Finishing



Corner staple up to 100 sheets<sup>4</sup> in stacks of 5,000 sheets<sup>4</sup> or saddle-stitch up to 100-page booklets<sup>4</sup> in paper sizes up to 13" x 19.2". A side jogger helps keep media in straight or offset stacks.

### Booklet Trimming



Help maintain high productivity with a large-capacity trim waste bin and on-the-fly waste removal for continuous production. These modules can combine with the Booklet Finisher to help users produce professional, full-bleed booklets in-line.

### Professional Booklet-Makers



Deliver professional-looking, lay-flat booklets with speed and simplicity using the SDD BLM300C for booklets up to 120 pages<sup>4</sup> or the Plockmatic BLM50/35 for up to 200-page<sup>4</sup> professional square-folded saddle-stitched booklets.

### Finisher Bridge



Connect the SDD or Plockmatic professional booklet-makers to the Staple Finisher without having to sacrifice corner stapling or 2-/3-hole punching.

## FEEDING OPTIONS

### Multi Drawer Paper Deck



Equipped with air-assist and air-separation, each drawer supports up to 13" x 19.2" and 130 lb. Cover as well as envelopes,<sup>5</sup> coated, and synthetic medias. The 5,000-sheet<sup>4</sup> capacity allows jobs to run with minimal interruption.

### POD Deck Lite



Designed for locations with space restrictions, this deck's 3,500-sheet<sup>4</sup> capacity with air-assist and air-separation supports paper sizes up to 13" x 19.2" and envelopes in a range of sizes.

### POD Deck Lite XL

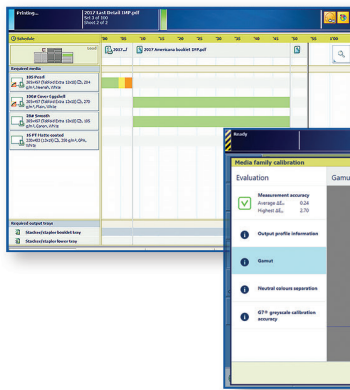


In addition to the capabilities of the POD Deck Lite, this feeding option holds up to 1,000 sheets<sup>4</sup> of media up to 13" x 30" in size—optimal for six-panel brochures, book covers, and posters.



<sup>4</sup> Capacity based on 20 lb. Bond.

<sup>5</sup> Optional accessories required.



## STREAMLINE WORKFLOW WITH CUTTING-EDGE PRINT SERVERS

### PRISMAsync PRINT SERVERS

#### A SINGLE POINT OF CONTROL

Canon's PRISMAsync Print Server and PRISMAsync Print Server LP consolidates control of your production workload into a single hub. Whether preparing simple jobs such as scan-to-file or complex jobs that require mixed media, you can easily perform a range of tasks from a single, consistent interface.

#### MANAGE JOBS INSTINCTIVELY

With PRISMAsync Remote Manager, operators can edit job properties, manipulate color curves, manage queues, submit print jobs, and even reroute jobs among multiple PRISMAsync-driven engines. This web-based, multipress solution provides remote monitoring from either your workstation or mobile device on your network.

#### IMPROVE PRODUCTION WITH FACT-BASED DATA

In an effort to find ways to help reduce turnaround time, waste, and costs, PRISMAlytics Dashboard<sup>6</sup> records press data and turns it into an easy-to-access and interpret dashboard, displaying usage-, production- and consumption-related information of your linked PRISMAsync-driven digital presses.

#### FLEXIBLE COLOR CONTROLS

The PRISMAsync Print Server incorporates an embedded in-RIP G7<sup>®</sup> calibration method.<sup>6</sup> Without a need for third-party software or complex procedures, operators can quickly and easily calibrate, profile, and verify their imagePRESS C910 Series color digital press to help achieve a near-neutral print condition. It also incorporates flexible color correction capabilities such as CMYK curve editing and digital moiré reduction with immediate visual feedback via the realistic Pixel Precise Preview.

#### INTUITIVE OPERATION

Stay in control of your daily workload with up to eight hours of plan-ahead production with Job Scheduler, where it will intuitively display time to completion of jobs and upcoming interventions for media, toner, or staples. Prepress and production tasks are intuitively clear with a highly visual user interface design. Templates, automated workflows, and hot folders allow for the managing of daily routine tasks.

<sup>6</sup> Optional on the PRISMAsync Print Server LP.





## imagePRESS SERVER H350 V2/G250 V2

### BE MORE PRODUCTIVE

With the ability to easily produce jobs with mixed paper sizes, paper types, and finishing as well as powerful spot color management and advanced color utilities, this controller can quickly help users modify routine job properties. It also supports a wide range of corporate network environments with numerous network security features.

### EFFICIENT JOB MANAGEMENT

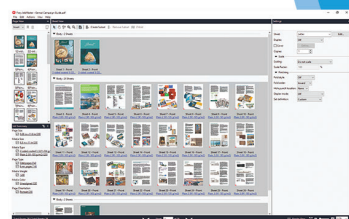
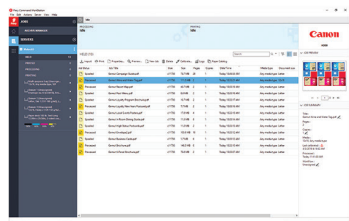
An intuitive print management interface for the imagePRESS server, Command WorkStation® centralizes and helps simplify job management. Operators can monitor and direct jobs, automate workflows, and preview and adjust documents.

### POWERFUL COLOR TOOLS

The Fiery Color Management Tools are designed to help provide both casual and expert users high color output for a variety of purposes. The Fiery ColorRight Package<sup>7</sup> and Automation Package<sup>7</sup> are equipped with a host of tools to help you preserve your customers' messages and branding.

### MEDIA LIBRARIAN

Media Librarian is a paper management application designed for the commercial print sector that seeks to improve makeready productivity on the imagePRESS C910 digital presses powered by imagePRESS Servers H350 V2/G250 V2. Directly from the software, operators can create, edit, and organize their paper stocks from a single, intuitive interface.

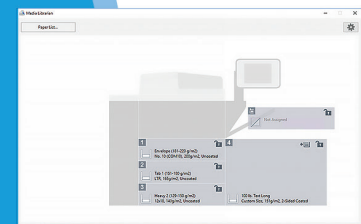


## imagePRESS PRINTER KIT

### EMBEDDED CONTROLLER FOR ENTRY-LEVEL PRODUCTION

Designed for operations that use a printer driver workflow or a centralized print, scan, and device management system, the imagePRESS Printer Kit is a great choice for a genuine Adobe PostScript® controller.

Intended to provide the ease you require in today's demanding business operations, the interface boasts many customizable, streamlined features. And with Canon's innovative MEAP platform, you can incorporate advanced scanning applications, cost recovery, document distribution, pull printing, and other customized applications.



<sup>7</sup> Optional accessories.

# EXPAND YOUR OPPORTUNITIES

## READY FOR GROWTH

The state-of-the-art imagePRESS C910 Series offers end-to-end solutions and outstanding day-to-day reliability that can help your operation achieve the desired success.

Produce a broad range of print products, including trifold brochures, saddle-stitched and square-folded brochures, direct mail, business cards, presentation and training materials, flyers, and perfect-bound books. Diversify your offering lineup with the ability to print on attention-getting stocks and envelopes in a range of sizes. Expand new horizons with duplexed, long-sheet printing of up to 30 inches.

With a choice of advanced print controllers and scalable, productive feeding and finishing options, this press can be configured to help you accomplish your goals.

## TEAMING WITH CANON

Selecting the imagePRESS C910 Series of color digital presses means you also choose Canon. And this gets you over 80 years' experience in the design and development of innovative imaging technology. Canon adds to this experience every day, constantly improving its technologies to stay at the forefront of innovation.

You also get the backing of a company that understands that each business and print room is unique, with its own needs. Canon and its Authorized Dealers bring the expertise and support to help you deliver new ideas and applications that can inspire your customers and help improve the productivity of your business.



**LEARN MORE**

Visit  
[usa.canon.com/  
productionprinting](http://usa.canon.com/productionprinting)

# SPECIFICATIONS

		imagePRESS C910	imagePRESS C810	imagePRESS C710
<b>Print Speed</b> (Simplex/Duplex)	8.5" x 11"	Up to 90 ipm	Up to 80 ipm	Up to 70 ipm
	11" x 17"	Up to 45 ipm	Up to 40 ipm	Up to 35 ipm
	12" x 18"	Up to 42 ipm	Up to 35 ipm	Up to 35 ipm
	13" x 19"	Up to 40 ipm	Up to 38 ipm	Up to 33 ipm
	13" x 30"	Up to 23 ipm	Up to 22 ipm	Up to 19 ipm
<b>Scan Speed</b> <sup>8</sup> (Letter, 300 dpi)	BW	Up to 230 opm	Up to 230 opm	Up to 230 opm
	Color	Up to 150 opm	Up to 150 opm	Up to 150 opm
<b>Print Resolution</b>		Up to 2400 x 2400 dpi	Up to 2400 x 2400 dpi	Up to 2400 x 2400 dpi
<b>Paper Capacity</b> <sup>9</sup>	Standard	Up to 1,650 Sheets	Up to 1,650 Sheets	Up to 1,650 Sheets
	Maximum <sup>8</sup>	Up to 10,400 Sheets	Up to 10,400 Sheets	Up to 10,400 Sheets
<b>Paper Size</b>	Standard	3.94" x 5.83" to 13" x 19.2"	3.94" x 5.83" to 13" x 19.2"	3.94" x 5.83" to 13" x 19.2"
	Optional	3.94" x 5.83" to 13" x 51.2"	3.94" x 5.83" to 13" x 51.2"	3.94" x 5.83" to 13" x 51.2"
<b>Paper Weight</b>	Standard	14 lb. Bond to 110 lb. Cover	14 lb. Bond to 110 lb. Cover	14 lb. Bond to 110 lb. Cover
	Optional	14 lb. Bond to 130 lb. Cover	14 lb. Bond to 130 lb. Cover	14 lb. Bond to 130 lb. Cover
<b>Automatic Duplexing</b>	Media Size	Up to 13" x 30"	Up to 13" x 30"	Up to 13" x 30"
	Media Weight	Up to 130 lb. Cover	Up to 130 lb. Cover	Up to 130 lb. Cover
<b>Envelopes</b>		#10 Business, Monarch, 6" x 9", 9" x 12", 10" x 13", DL, ISO-C5	#10 Business, Monarch, 6" x 9", 9" x 12", 10" x 13", DL, ISO-C5	#10 Business, Monarch, 6" x 9", 9" x 12", 10" x 13", DL, ISO-C5
<b>Print Servers</b>		PRISMAsync Print Server imagePRESS Server H350 V2 imagePRESS Server G250 V2 Canon Printer Board	PRISMAsync Print Server PRISMAsync Print Server LP imagePRESS Server H350 V2 imagePRESS Server G250 V2 Canon Printer Board	PRISMAsync Print Server PRISMAsync Print Server LP imagePRESS Server H350 V2 imagePRESS Server G250 V2 Canon Printer Board (standard)

## OPTIONS

### Feeding

- Multi Drawer Paper Deck
- POD Deck Lite
- POD Deck Lite XL
- Stack Bypass
- Long Sheet Tray

### Canon Finishing

- Sensing Unit-A1
- Document Insertion Unit
- Multi Function Professional Puncher
- High-Capacity Stacker
- Perfect Binder
- Perfect Binder Continuous Kit
- Paper Folding Unit
- 2-/3- Hole Punching
- Stapler Finishers
- Booklet Finishers
- DFD Finisher Interface and Bridge
- Booklet Trimmers
- Long Sheet Catch Trays

### Third-Party Finishing

- SDD Square Fold Booklet-Maker
- SDD Square Fold Booklet-Maker with Two-Knife Trimmer
- SDD BLM300C Booklet-Maker
- Plockmatic BLM50/35 Booklet-Maker
- GBC eWire Pro
- MAX Ring Binder
- Plockmatic Multi Purpose Stacker

<sup>8</sup> Optional accessories required.

<sup>9</sup> Based on 20 lb. Bond.

# imagePRESS C910/C810/C710



 [USA.CANON.COM/PRODUCTIONPRINTING](http://USA.CANON.COM/PRODUCTIONPRINTING)



As an ENERGY STAR® Partner, Canon U.S.A., Inc. has qualified these models as meeting the ENERGY STAR energy efficiency criteria through an EPA recognized certification body. ENERGY STAR and the ENERGY STAR mark are registered U.S. marks. Canon, imagePRESS, and the GENUINE logo are registered trademarks of Canon Inc. in the United States and may also be registered trademarks or trademarks in other countries. PRISMA is registered trademarks of Canon Production Printing Netherlands B.V. All other referenced product names and marks are trademarks of their respective owners. All output is simulated. Specifications and availability subject to change without notice. Not responsible for typographical errors.  
©2021 Canon U.S.A., Inc. All rights reserved.

Federal Law prohibits copying of certain documents. Violators may be subject to penalties. We suggest that you check with your own legal counsel. Canon U.S.A., Inc. and Canon Canada, Inc. intend to cooperate with Law Enforcement Agencies in connection with claims on unauthorized copying.

1021R5-C910-PDF-IH

