



# CABLE ID PRINTER Mk2600 / Mk1500





# Amazingly Fast, Easy, and Clear

## Mk2600 Cable Marker

### Productivity

High Speed printing 40mm/s

3 selectable speeds

High	40mm/sec
Mid	25mm/sec
Low	18.5mm/sec

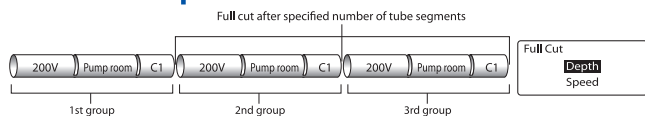
### Accuracy

Fine pitch adjustment



Pitch is adjustable in 0.01% steps.

### Full/half Automatic cut with depth control



CABLE ID PRINTER Mk2600

## Printing Material

● Mk2600 ● Mk1500

### Tubes



Direct printing on commercially available Soft PVC tubes (inner diameter: 2.5 to 6.5 mm) is possible. Heat Shrinkable tubes  $\Phi$ 3.0 to 6.4mm, Flat tube type materials are also acceptable.\*

\* Before using a tube, be sure to check whether characters can be printed on it.

\* The Mk1500 accepts with 2.5 mm to 5.2 mm diameter tubes.

High-quality crisp printing ensures distinct legibility in small characters with resistant marking.

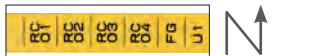
### Plastic Plate Strips

With the required Plate Attachment, it is possible to print on thin plastic plate strip material. \* Mk2600 only  
The length can be set from 2 to 150mm.  
With fine printing pitch control, marking the plate strip material is easy and legibility is high.



### Various print template patterns

Vertical/Horizontal Character \*1



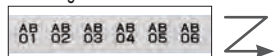
Vertical/Vertical Character



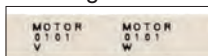
Horizontal/Horizontal Character



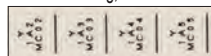
No cutting lines between column of characters



3line/segment \*2



All line centering, Vertical/Horizontal Character



Framing



Combined column (Upper Lower Segment) with horizontal characters



\*1 Only Mk2600 allows Vertical/Horizontal Character printing.

\*2 Only 1.3mm (Full width) alphanumeric characters Mk2600 only.

### Label Tape

A wide variety of label tapes are supplied in the form of handy and convenient cassettes. Label tape comes in widths of 6mm, 9mm and 12mm, and colors of white or yellow.



# Reliable marking printer which fits right at the cable identification work site.

CABLE ID PRINTER  
Mk2600 / Mk1500

● Mk2600 ● Mk1500

## Ease of Use



Easy to type Notebook PC like QWERTY key Board ensures both comfort and efficiency.



Setting the material is very easy with included Tube Attachment. Simple operation is fundamental factor for productivity.



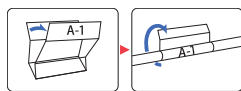
Light weight and handy design allows you to take the machine to the job site easily.

## Printing Material

### Wrap Around Tape



Transparent laminate film covers the printed surface and securely wraps around the cable.



Wrap the printed area with transparent adhesive laminate around the cable.

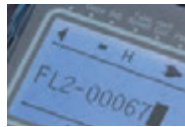
### Hard Case



Custom Hard Case to store and protect your Cable ID Printer.

## Various Features

### Back Lit LCD display



With a high contrast, distinctive back lit display, operating the machine is comfortable even in a dimly lit work environment. It guide's you through the menu to the necessary settings such as material and the size of the characters easily.

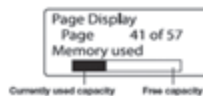
### Print Length Adjustment

The print length can be adjusted in steps of 0.01%. \* Mk2600 only  
Precise pitch control is useful in creating an indication plate for terminal blocks.



### Memory and folders

Internal memory can store as much as approximately 60,000 characters.\*  
Up to 10 folders can be created.\*  
Every Folder can save up to 99 files.\*  
\*Mk2600



### Automatic full /half cut with depth control

Full /half Automatic cut is selectable. Depth control, cutting speed control is available from control panel. A convenient feature to assist on large projects.



Half cuts can be manually separated easily.

### Consecutive/Serial Printing

Multiple reiteration of same character lines and group printing; different set of a certain character lines, are available in easy compiling function. Sequential numbering is available in 4 digits.



Serial Printing (4 digit)



Consecutive Printing

## Standard PC Connectivity

The printer can be linked with PC through USB interface PC Connection Kit

Data can be sent from a PC to the printer\*, allowing you to print large quantities of data with ease. In addition to the existing original files, the printer can read CSV-format files. This feature greatly reduces the time required for field work.

\* Mk2600 only



## Simple and Easy-to-Use Standard Model

CABLE ID PRINTER  
Mk1500

Rubber Keyboard  
Tube/Tape Print at 25 mm/s



## Specifications

	■ Mk2600	■ Mk1500	
Printing method	Thermal transfer		
Resolution	300dpi		
Printing speed	Tube : High speed 40 mm/s, Middle speed 25 mm/s, Low speed 18.5 mm/s Label : High speed 40 mm/s, Middle/Low speed 25 mm/s	Tube : High speed 25 mm/s, Standard 18.5 mm/s, Low speed 12.5 mm/s Label : High speed 25 mm/s, Standard/Low speed 18.5 mm/s	
Output rate	High speed : About 42 pcs./min. Middle speed : About 35 pcs./min. Low speed : About 30 pcs./min. (Printing 20mm tubes, 5 full-size characters, consecutive print mode, half - cutting.)	High speed : About 35 pcs./min. Standard speed : About 30 pcs./min. Low speed : About 21 pcs./min. (Printing 20mm tubes, 5 full - size characters, consecutive print mode, half - cutting.)	
Ink Ribbons	Ribbon cassette. Black : 100 m, White : 85 m		
Character sizes	1.3 mm(only full-width available), 2 mm, 3 mm, 6 mm (full-width, half-width available for each).	2 mm, 3 mm, 6 mm (full-width, half-width available for each).	
Input modes	Alphanumeric, Symbol input		
Display	LCD Graphic (160 x 64 dots) with back light		
Display capacity	10 characters / line x 2 lines (full-width) or 20 characters/line x 2 lines (half-width)		
	3 lines editing is possible. ----		
Built-in memory	Print data: Approx. 5,000 characters Files: Approx. 60,000 characters , 10 Folders (each can save up to 99 files)	Print data : Approx. 2,500 characters Files : Approx. 7,500 characters , or 20 files	
Media cutting function	Automatic full - cutting, Automatic half - cutting		
Power supply	AC Adapter (Input voltage : AC 100V - 240V 50 / 60 Hz)		
PC interface	USB2.0 Full - Speed, PC Connection Kit (Included)	----	
Operating environment	15°C - 32.5°C (59°F - 90.5°F), 10% - 85% RH		
Storage environment	5°C - 35°C (41°F - 95°F), 10% - 90% RH		
Dimensions (W x D x H)	250 x 300 x 85 mm (9.8 x 11.8 x 3.4 inch)		
Weight	2 kg (4.4 lb.) (printer only)		
Print Media	Tube	PVC tube, φ2.5-6.5 mm, 0.5 mm thick With Tube attachment	PVC tube, φ2.5 - 5.2 mm, 0.5 mm thick With Tube attachment
	Heat Shrink Tube	Before using a tube, be sure to check whether characters can be print on it.	
		Heat Shrink tube φ3.0-6.4mm With Tube attachment	
	Label Tape	Before using a tube, be sure to check whether characters can be print on it.	
		Tape cassettes (White, Yellow) Widths : 6 mm, 9 mm, 12 mm, Length 30 m Segment length can be set from 2 mm to 150 mm.*	Tape cassettes (White, Yellow) Widths: 6 mm, 9 mm, 12 mm, Length: 30 m Segment length can be set from 8 mm to 150 mm.
	Wrap Around Tape	Tape cassette (8m) or Commercially available reel with optional Wrap around Tape Guide. Print area only: White, Other areas: Transparent Take-up length: 8 m Length: 33 mm	
		Segment length : 6 -150 mm (depends on cut setting)	Width: 8-150 mm (depends on cut setting)
	Marking Strip	Specified thickness : 0.5 mm	
		Plates of other thickness should be tested before printing.	
		Width : 8 mm, 8.5 mm, 9 mm, 9.5 mm, 10 mm	
		Plate Attachment option is required. Manual cut only	

\* If 1.3mm full-width or 2mm half-width character is selected for segment length of less than 3mm, text might be printed crossing over the cutting line.

## Accessories



Plate Attachment  
To print on thin plastic plate strip material, the Plate Attachment is required.



Custom Hard Case  
Custom Hard Case to store and protect the Cable ID Printer.

Product Code	Product Name	Compatible Printer
3843V026	Custom Hard Case	Mk 2600 / Mk 1500
3471A033	Plate Attachment	Mk 2600
3476A046	Tube Attachment	Mk 2600 / Mk 1500
3471A032	Wrap Around Tape Guide	Mk 2600 / Mk 1500

\* Tube Attachment and Wrap Around Tape Guide are included with Mk2600/Mk1500, and are offered as replacements.

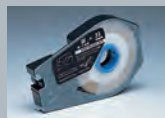
## Consumables



Ribbon Cassette



Label Tape



Wrap Around Tape

Product Code	Product Name	Product Code	Product Name
3604B001	Ribbon Cassette Black (100m)	3476A042	Cutter Set
3607B001	Ribbon Cassette White (85m)	3476A043	Cleaner Set for Tube Attachment
3476A023	Label Tape Cassette 6mm×30m(White)	3476A078	Cleaner Set for Plate Attachment
3476A024	Label Tape Cassette 9mm×30m(White)		
3476A025	Label Tape Cassette 12mm×30m(White)		
3476A026	Label Tape Cassette 6mm×30m(Yellow)		
3476A027	Label Tape Cassette 9mm×30m(Yellow)		
3476A028	Label Tape Cassette 12mm×30m(Yellow)		
3606B001	Ribbon Cassette Black (for Plate Attachment)		
3476A075	Wrap Around Tape 33mm×8m(White)		



**Caution!**  
Before you use an Mk series printer, please read the instruction manual thoroughly.  
When you use the printer, obey all instructions in the manual. Always operate the printer with the power supply and voltage rating described in the manual.

Specifications are subject to change without prior notice for product improvement.